



MARCH 2020 | ISSUE 07

## WHAT'S INSIDE THIS ISSUE:

Wormall Civil feature  
project: Witchcliffe  
Ecovillage | Page 1/2

---

Project Update:  
Glendalough | Page 3

---

Peel Business Park: Bushfire  
Centre | Page 4

---

Workshop Update | Page 5

---

Introducing Wormall Civil  
Team Member: Daniel R  
Strickland | Page 6

---

Wormall Civil Community  
Involvement: Patrick Lane,  
Ronald McDonald House  
Charities | Page 7

---

Wormall Civil Staff  
Milestones | Page 8

Hello all,

Wow, there certainly is a lot to write about that has occurred in this wonderful country of ours since the last edition of "The Dirt" sadly most events have not been positive.

I would like to start out by expressing our deepest sympathy to the families deeply effected by the intense bush fires throughout Victoria and New South Wales. The whole nation was emotionally impacted by this. As an organisation all the way across in WA we pledged our support by way of financial support to WIRES (The Australian Wildlife Rescue Organisation) as the impact of these events on some of our wildlife will never fully recover.

Since the fires the East Coast has been ravaged by extreme floods, before the impact of COVID-19 which is now at the front of mind for all humans worldwide.

Aside from the above events, things have started to show some signs of recovery for the WA housing market. Obviously, very unfortunate that just as our industry has started to regain some momentum COVID-19 has reared it's head.

Fingers crossed that it passes us rapidly and allows things to progress to a more buoyant housing market.

Recently, Wormall Civil commenced works at the Witchcliffe Eco Village, just a little south of Margaret River. This is a very exciting "World Class" project focusing on very conceivable form of sustainability. We are excited to be involved and wish Mike Hulme and his team every success with bringing their dream to life.

This project is a significant milestone project for Wormall Civil for us to use as our springboard into the South West development market. This is something we have been preparing for over the past 18 months.

It is always difficult to mention a key project at any given time, as we are very appreciative and positive about every opportunity we are awarded, however I do feel that special mention should be made of the Glendalough Medium Density development which is a Stockland project.

Until next edition I wish all our readers the very best in all you do.

I know these are troubling times, so do what you can in the best interest of keeping you and your loved ones safe.

Shane Wormall  
Managing Director

**Wormall**  
CIVIL

# WORMALL CIVIL FEATURE PROJECT: WITCHCLIFFE ECOVILLAGE

## PROJECT HISTORY:

The Ecovillage site was previously occupied by two farms: an organic vineyard owned by Cape Mentelle, and a hobby beef cattle farm.

Sustainable Settlements Director and Project Founder, Mike Hulme, first identified the Ecovillage site in 1994. However, it wasn't until 2010 that his company, Sustainable Settlements, and joint venture business partners, the Perron Group, purchased both properties with the intention of developing a model ecovillage.

Part of the appeal of the Witchcliffe site was that it was already cleared farmland, with small pockets of forest and an abundance of water, abutting the small town of Witchcliffe.

Although degraded by clearing and historical agricultural practices, the 8.84ha of remnant bushland and revegetated creeklines have great habitat potential and have been set aside as conservation zones to be rehabilitated and preserved for future Ecovillage residents to care for and enjoy.

Potential human impact on wildlife will be minimised through landscaped corridor plantings to provide links between bush areas and by strata bylaws that will control domestic animals and the use of chemicals within the Ecovillage.

## ECOVILLAGE FEATURES:

- 100% renewable energy for households, businesses and daytime EV charging
- 100% water self-sufficiency including extensive capture and reuse stormwater for all irrigation requirements
- Extensive community gardens and small agriculture lots enable residents to be self-sufficient in fresh food produce
- Environmentally sensitive on-site waste water treatment
- Solar passive house design and lot layouts
- Low carbon, low impact, and where possible, local building materials
- Bike and pedestrian friendly path networks
- Local employment and business opportunities
- Conservation of remnant bush habitat and streams, protection of wildlife and control of domestic animals
- A healthy, caring, socially inclusive community.

**"While it's fair to say "greenwash" is alive and well in the property industry, we believe that true sustainability is about trying to live simply and lightly in a way that best conserves and regenerates resources for future generations to enjoy"**



## WORMALL CIVIL FEATURE PROJECT: WITCHCLIFFE ECOVILLAGE

Wormall Civil are extremely excited to be awarded and drawn in to such a dynamic and innovative development by Sustainable Settlements and Perron Developments.

As Wormall Civil looks to consolidate our position in the South West, what better way than with this high profile development:

- 5,000m of sewer reticulation which also includes eleven of Smartstream's innovate Smart Pit
- 2,000m of sewer pressure main & two waste water pumping stations
- 2,000m of reinforced concrete drainage & 650m of PVC drainage
- 5,000m of water reticulation
- 8,500m of electrical cable & 5 transformers
- 8,000m of communication pipe
- 25,000m<sup>2</sup> of asphalt pavement
- In addition the Bussell Highway intersection works

Our team will aim to complete roads, drainage and services of Stage 1 before winter, with works continuing into subsequent stages as weather permits.

**"Wormall Civil has a reputation for reliable service and has delivered high quality construction in and around Perth with significant streetscaping elements and a commitment to using local contractors"**

*Mike Hulme, director of Sustainable Settlements and founder of the project.*



## PROJECT UPDATE: STOCKLAND'S GLENDALOUGH DEVELOPMENT TO CLOSE HOUSING GAP

**Project Manager:** Mike O'Donoghue    **Site Supervisor:** Brett Perry

Terrace homes will soon be on the rise in Stockland's new residential communities as the developer moves to address Perth's housing gap. Stockland WA general manager Col Dutton said there was an increasing need for a housing style other than detached homes or apartments that delivered affordable, low-maintenance living. "This gap in housing styles is called the 'missing middle' – something in between a typical block of land with a house on it and an apartment," he said.

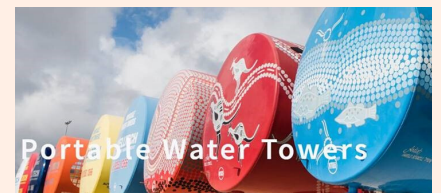
"A lot of people have busy lifestyles and they don't want to wrestle with the garden every weekend but they still want a beautiful home with plenty of space that has outdoor living areas."

Stockland's acquisition of a 2.84ha site at Glendalough, 4.5km north of the Perth CBD, will eventually deliver 97 terrace homes in a walkable community setting. It is the developer's first standalone acquisition for medium density development in Perth.

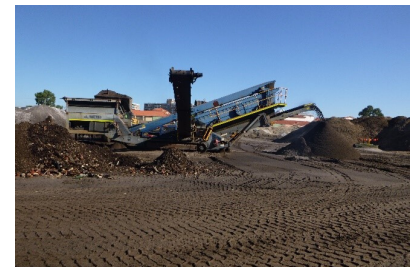
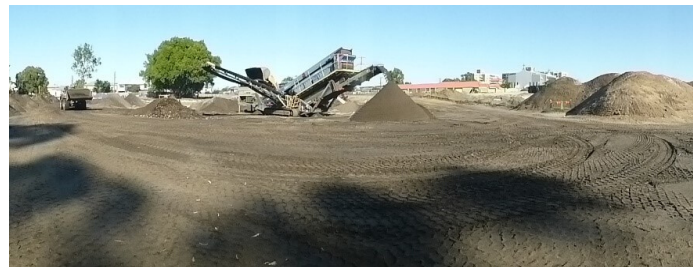
Wormall Civil is undertaking the remediation, earthworks, roadworks and services installation on this inner urban infill project.

As part of its Reconciliation Action Plan (RAP) Wormall Civil decided to lease one of local Indigenous artist Harold Bennell's artistically designed and painted water tanks from supplier Welltech. Harold and his daughter Lisa were commissioned by Welltech to paint a series of four tanks. Each tank represents a story of community, water, desert animals and desert people. The Glendalough site is home to the desert tank representing the desert people. "Harold has now sadly passed. Welltech offered to erect one of his tanks at his funeral but finding a suitable location made this difficult. Welltech General Manager David Henderson has advised that they will let the tanks age gracefully and maybe one day donate them to the City of Fremantle where the workshop of the company Harold worked for was located." Mike O'Donoghue, Project Manager, Wormall Civil.

"A lot of people have busy lifestyles and they don't want to wrestle with the garden every weekend but they still want a beautiful home with plenty of space that has outdoor living areas."



Harold and Lisa's artwork on water tanks at Glendalough



### Scope of Works

Environmental and geotechnical screening remediation under the previous building footprint that was demolished. Earthworks cut to fill and import fill.

Specialised Arborist works within TPZ areas involving the retention of mature trees and careful removal of unsuitable trees with low retention value under Arboricultural supervision. A lot of trees marked for retention were intertwined with trees identified for removal.

Gravity Sewer reticulation installation

Stormwater Drainage installation including the installation of 'Stormbrix' attenuation tanks.

Retaining wall installation involved the construction of a modular post and panel retaining wall, installation of mass limestone retaining wall and the construction of rendered brickwork screen wall on top of a reinforced concrete footing.

Water reticulation including two no. crossings under existing Rawlins Street using directional drilling trenchless technology.

Gas Reticulation

External Power Reticulation on Rawlins Street and Powis Street involving the removal of overhead existing power lines by the installation of underground power reticulation installed by directional drilling trenchless technology and the decommissioning of an existing power transformer on site. Internal Power reticulation including the installation of underground power pits at lot connection locations.

Roadworks including pavement install, kerbing, footpath and landscape treatments.

# PEEL BUSINESS PARK BUSHFIRE CENTRE



"This is a huge step forward in dealing with bushfires in WA - it's world-leading and the first time it's ever been done,"  
Premier Mark McGowan

The Peel region will be home to Australia's first Bushfire Centre of Excellence after the first sod was turned at the site last week.

Construction has now officially commence on the \$18 million purpose-built centre at the Peel Business Park in Nambeelup.

The centre will run courses in bushfire prevention, management and training and have specialist indoor and outdoor training facilities, collaboration spaces and an interpretive learning centre for community information.

Premier Mark McGowan said Western Australia was "once again" leading the nation in bushfire management.

In attendance on the day was Premier Mark McGowan; Ministers Logan, Templeman and local MP Robyn Clarke, FES Commissioner Darren Klemm and Shire of Murray President David Bolt plus Indigenous Elder Harry Nannup all present too with Paddy Creevey Chair of the Peel Development Commission plus many other dignitaries and senior representatives of DevelopmentWA.

Wormall Civil are proud to be involved in such a great initiative. The project will really focus the nation's attention on the Mandurah and Pinjarra areas - and as a local Peel business we feel that this is only a good thing.

The Bushfire Centre of Excellence facility in the Peel Business Park is scheduled to open in December 2020.

"Bushfires are a big issue across Australia and this puts WA at the cutting edge of educating firefighters, preventing bushfires and ensuring we have the best mitigation practices right here in WA."

Premier Mark McGowan



# WORKSHOP UPDATE

Wormall Civil provides career opportunities for employees by setting up pathways for individuals. There are ample opportunities for Wormall Civil workers to enhance skills and motivation.

Recently, Kobi Davis and Jaiden Marlow finished their apprenticeship and are now full time Diesel Fitters with Wormall Civil.

Kobi has been employed with Wormall Civil since 2013, with Jaiden joining our team in 2015, they are both very valuable employees within our Workshop department.

Congratulations to both Kobi and Jaiden on completing their apprenticeship. Well done on sticking to your studies and we wish you both the best of luck in your roles.

We have started the New Year off with a focus to continue to invest heavily in upgrading of our fleet, both heavy plant and light vehicles, ensuring that the business continues to meet the demands of the market.

We are expanding our already extensive fleet with the addition of:

**3 x 30 Tonne Volvo Excavators**

**2 x 30 Tonne Volvo Excavators**  
*(arriving late March)*

**2 x L70 Volvo Loaders**  
*(arriving late March)*

**Workshop fitters Hilux Utes**  
*(arriving late March)*



Kobi Davis



Jaiden Marlow



## INTRODUCING WORMALL CIVIL TEAM MEMBER: DANIEL R STRICKLAND

### *Project Manager*

Daniel has been employed with Wormal Civil since early 2017.

First employed as an Assistant Project Manager, Daniel has now been promoted to Project Manager.

Daniel's current projects include Trinity at Akimos, Allara and One71 Baldivis.

Congratulations Daniel on your achievements and all the best for your new role.



### **Before working at Wormal Civil, what was the most unusual or interesting job you've ever had?**

I worked at a stall at the Royal Show where I sold numbered tickets to people who then matched their number to different prizes on the board. Not very exciting work, but sometimes it's gotta be done!

### **How has Wormal Civil helped you in your career development?**

I came to Wormal fresh out of Uni, so I had a large range of knowledge, but limited experience in applying this to industry projects. Since being here, I've been given the tools I need and people have invested their time in my development to allow me to bring everything together and get me to a point where I'm managing my own projects within 3 years.

### **Best vacation you've been on?**

Mid 2019 my partner and I went to Canada to work at a kids summer adventure camp for 3 months. It was an absolutely stunning place surrounded by fresh water as far as you could see. We then topped it off with a road trip down the west coast of California.

### **If Hollywood made a movie about your life, who would you like to see cast as you?**

It would have to be Daniel Craig, not just because of the name, but my life is similar to the action scenes in Casino Royale...

### **If you had to eat one meal, every day for the rest of your life, what would it be?**

Chicken parmi sided with spaghetti bolognese.

### **What is the first thing you would buy if you won the lottery?**

I would be buying a ticket to go back to Whistler for a MTB summer and a snowboarding winter.

*Being a part of the community by way of sponsorship  
is our way of giving back to West Australians*

## WORMALL CIVIL COMMUNITY INVOLVEMENT



### **Patrick Lane, Australian Dancesport Championship**

Wormall Civil are proud supporters and sponsors of Patrick Lane.

Patrick has been a long term employee of Wormall Civil, and keen dancer who represented WA in the Australian Dancesport Championship in Melbourne.

Congratulations to Patrick on his great results, and on bringing home three medals.

### **Ronald McDonald House Charities**

Wormall Civil had another lot of eager employees cook up a feast for families at Ronald McDonald House Charities.

Ronald McDonald House Charities offers a home-away-from-home for families with children undergoing care at Perth Children's Hospital.

Parents often return to the House after a long day by their child's hospital bed and cooking a meal may be the last thing on their minds.

Thank you to our team of chefs for volunteering.





## WORMALL CIVIL STAFF MILESTONES



### Dave Foord

Operations  
Estimating Manager

27 Years

### Ben Dysart

Construction  
Manager

17 Years



### Peter Duhig

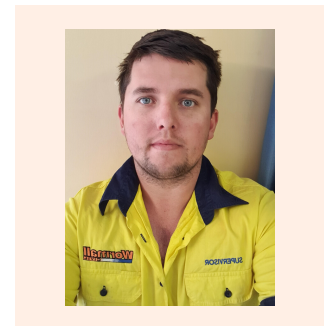
Site  
Supervisor

14 Years

### Josh Gibb

Site  
Supervisor

7 Years



## WELCOME TO THE TEAM

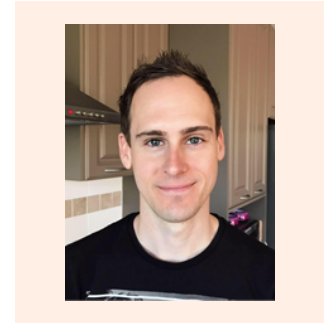


### Maggie Stidworthy

Accounts  
Officer

### Brett Wormall

Estimator



## STAFF CHANGES

Congratulations to Roxley Penney who has been promoted to the position of Senior WHSQ Coordinator. Cathy Chmielewski who is now our Payroll Officer, and Dominique Kingston who is now Executive Assistant to the Managing Director.

Wormall Civil would also like to extend our congratulations to Besim Kqiku, who has been promoted to WA General Manager for Smartstream Technology. Besim has also just completed his Bachelor of Politics and International Studies. Congratulations Besim!



Wormall Civil Pty Ltd



wormall\_civil



Wormall Civil

Wormall Civil Pty Ltd  
17 Cardup Siding Road  
Cardup, WA 6122  
P: (08) 9526 1400  
E: office@wormallcivil.com.au